

# THERMAL SPRAY GUNS

---

## SPARE PARTS



## About company

Global surface technologies was founded by former experienced team from world known surface solutions market leaders. We are starting our journey with intention to provide our customers with better engineered "turn key" surface treatment and thermal spray solutions.

One of our core competencies is software development for our robotics engineered systems. It gives us a capability to provide our customers well designed engineered systems for reasonable price. We help our customers think on production process and return on investment.

Our vision is to be a recognized novel leader in innovative, sustainable, engineered, and customer-focused solutions for performance-critical applications in the oil and gas, power generation, aerospace, automotive and other industries (Thermal spray equipment, welding and laser cladding equipment, metal treatment equipment).

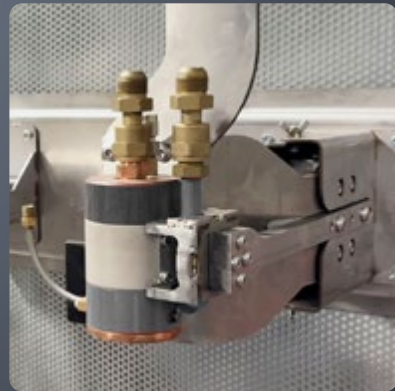
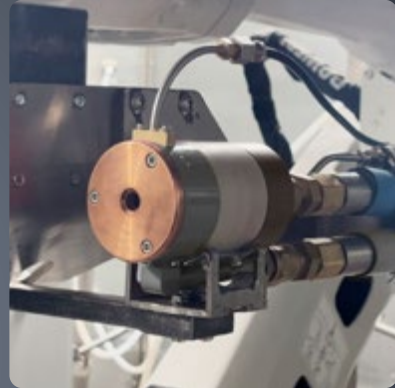
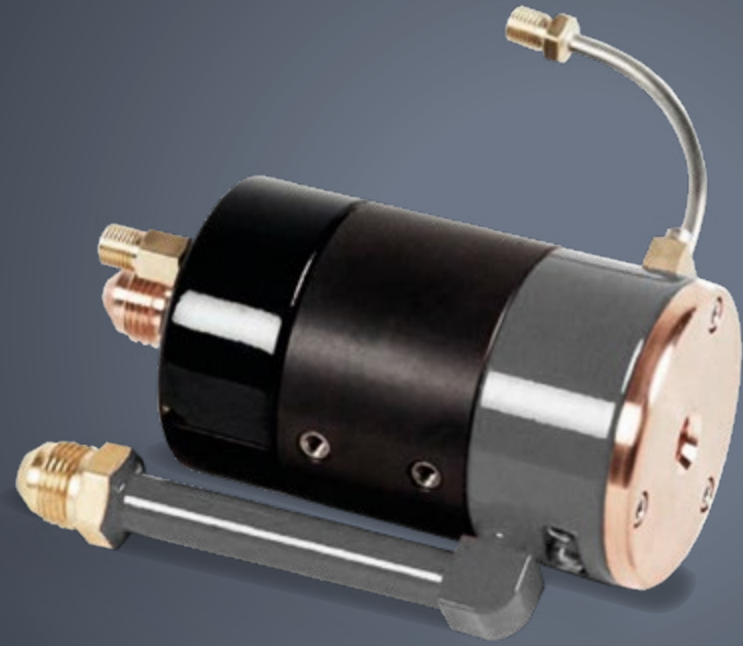


## Content

Thermal Spray Guns	5
GST SG-100 Plasma gun	6
GST F1-90 Plasma Gun	8
GST F1-45 Plasma Gun	10
GST F4MBXL-90 Plasma gun	12
GST F4MBXL Plasma gun	14
GST JP5000 HVOF Spray Gun	16
GST 3MB Plasma Gun	18
Spare parts for plasma guns	21
GST F4MBXL-90 Plasma Gun spares	22
GST F4MBXL Plasma Gun spares	28
GST JP5000 Spare parts	36

# THERMAL SPRAY GUNS





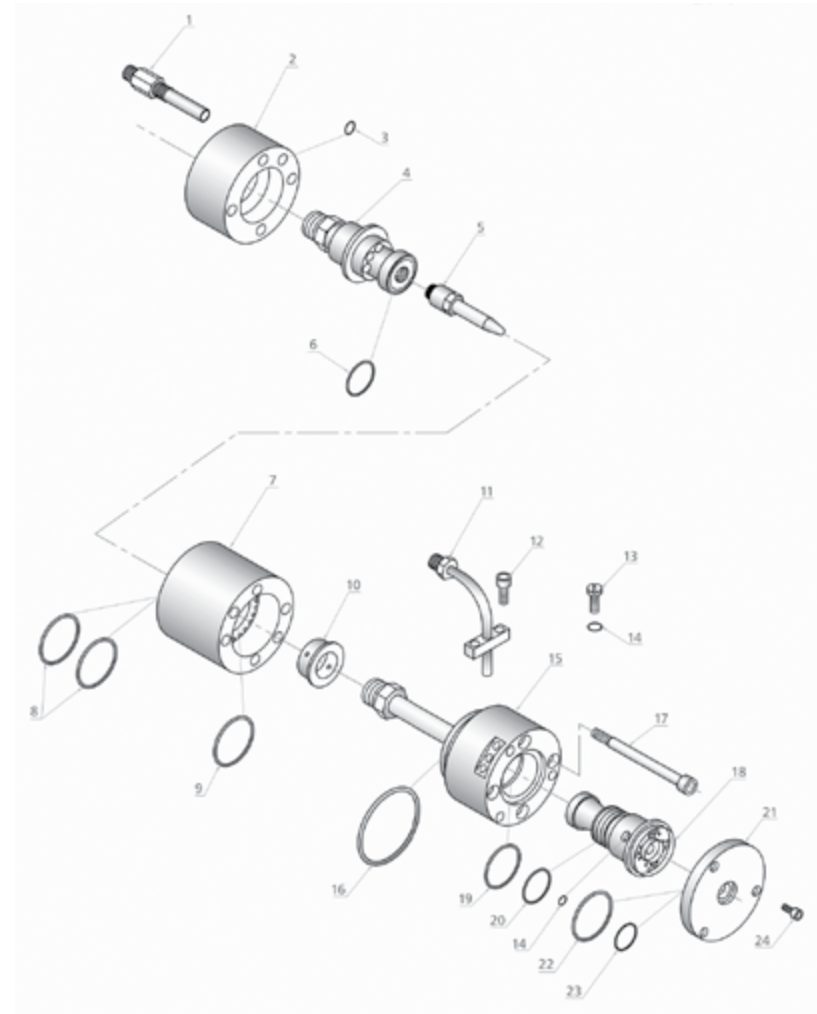
## GST SG-100 Plasma gun

GST SG-100 model is a high power (80 kW) plasma gun. GST SG-100 is suitable for both large scale production and smaller scale production where system flexibility is required.

GST SG-100 plasma gun is used to process the surfaces of components by applying various types of coatings, such as hardening coatings, anti-corrosion coatings, wear-resistant coatings, heat-resistant coatings, etc. Coating type depends on the material being sprayed. Metal powders, ceramic powders, cobalt-based alloy powders, carbide powders can be used.

Plasma gun design features coaxially aligned nozzles and electrode, allowing the selection of different powder injector and shield cup diameters suitable for a specific task and ensuring maximum productivity and high coating quality. Plasma gun can operate with various combinations of plasma gases, which ensures its applicability for a wide range of coatings.

### GST SG-100 Plasma Gun

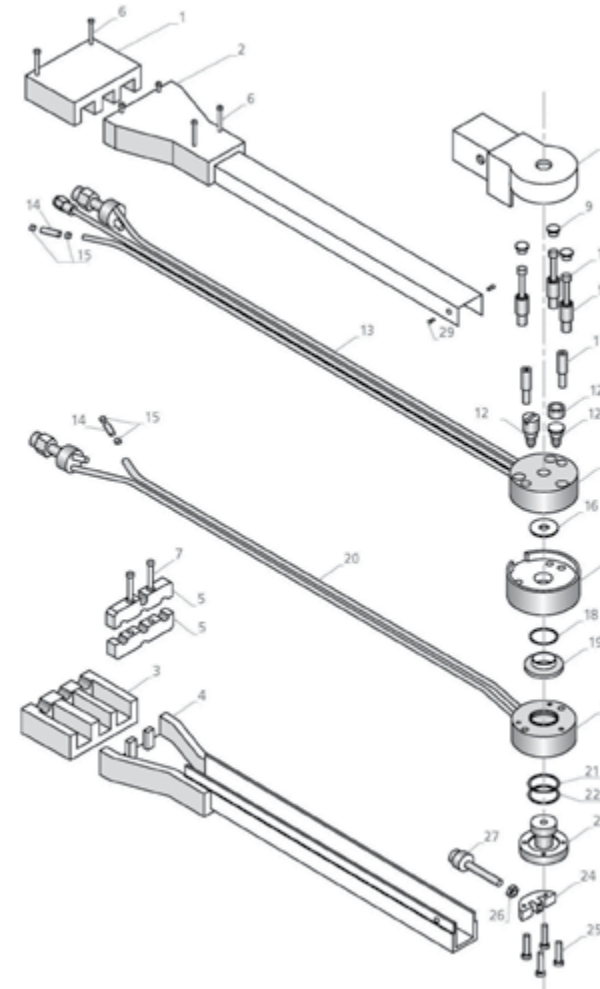


- 1 Tube, arc gas port, assembly
- 2 Gun housing, rear
- 3 O-Ring, rear housing
- 4 Cathode holder
- 5 Cathode, NVS
- 5 Cathode, sub-sonic
- 5 Cathode, Mach 1
- 5 Cathode, Mach 2
- 6 O-Ring, cathode holder
- 7 Gun housing, middle, insulator
- 8 O-Ring, middle housing
- 9 O-Ring, middle housing
- 10 Gas injector NVS, 4 Holes, all gases.
- 10 Gas injector, Sub-sonic/Mach 1, CW vortex, 4 Holes, all gases
- 10 Gas injector, Mach 2, std (brown), CW vortex, 16 holes, all gases
- 10 Gas injector, Mach 2, CW vortex, 16 Holes, Ar-He only
- 10 Gas injector, 8 hole, Laminar, put s at Hole(s), all gases
- 10 Gas injector, 8 hole, Laminar, put s at Hole(s), all gases
- 11 Tube, powder, 90 deg.
- 11 Tube, powder, straight
- 12 Screw, powder tube
- 13 Plug, powder port
- 14 O-Ring, nozzle / powder port plug
- 15 Gun housing, front
- 16 O-Ring, front housing
- 17 Screw, insulator housing
- 18 Anode, forward injection, NVS
- 18 Anode, forward injection, sub-sonic
- 18 Anode, backward injection, sub-sonic
- 18 Anode, straight injection, sub-sonic
- 18 Anode, Mach 1
- 18 Anode, Mach 1
- 18 Anode, backward injection, Mach 1
- 18 Anode, forward injection, Mach 2
- 18 Anode, backward injection, Mach 1
- 18 Anode, sub-sonic
- 19 O-Ring, front housing
- 20 O-Ring, nozzle
- 21 Plate, front cover, standard
- 22 O-Ring, front cover plate
- 23 O-Ring, front cover plate
- 23 O-ring, nozzle / powder port plug
- 24 Screw, front cover plate

Processing can be carried out using various process gases such as argon, nitrogen, helium and hydrogen. This model allows spraying with powder supply both from the inside and outside of plasma gun (as in the case of F4 plasma gun and similar ones). Powder can be supplied in different ways (perpendicular to the jet, in the same direction as the jet or opposite to the jet).

This variety of powder feed methods ensures optimum energy transfer to the particles, resulting in high coating efficiency.

## GST F1-90 Plasma Gun



- 1 Shell for F1-45/90
- 2 Shell for F1-45/90
- 3 Shell for F1-45/90
- 4 Shell for F1-45/90
- 5 Holder
- 6 Socket head cap screw
- 7 Socket head cap screw for holder
- 8 Cover
- 9 Insulating sleeves and covers
- 10 Screw, M3x16
- 11 Centering pin
- 12a Electrode, plug type
- 12b Screw for electrode
- 13 Rear section complete
- 14 Connecting hose
- 15 Connecting hose clamp
- 16 Gas distribution ring
- 17 Intermediate section complete
- 18 O-Ring
- 19 Intermediate section complete
- 20 Front section
- 21 O-Ring
- 22 O-Ring
- 23.1 Nozzle, 5 mm
- 23.2 Nozzle, 6 mm
- 23.3 Nozzle, 7 mm
- 24 Injector support standard
- 25 Nozzle screws, M3x10
- 26 Locknut, M5
- 27.1 Powder injector 1.5 mm
- 27.2 Powder injector 1.8 mm
- 27.3 Powder injector 2.0 mm
- 27.4 Powder injector 1.5 mm
- 27.5 Powder injector 1.8 mm
- 27.6 Powder injector 2.0 mm
- 28 Gun holder complete
- 29 Screws, M3x6

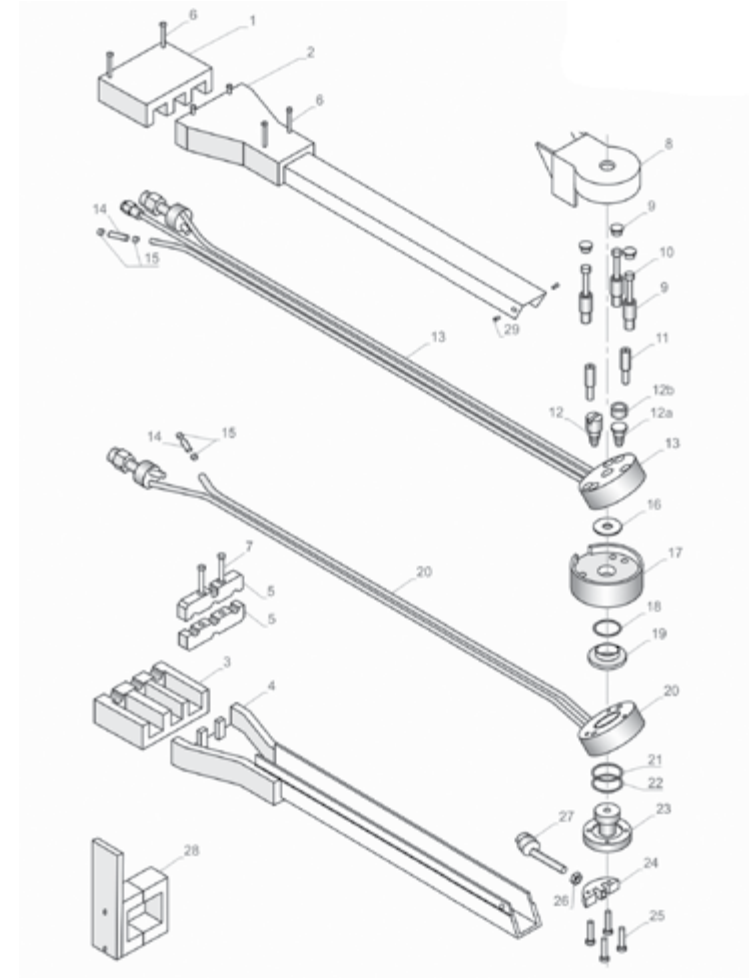
Following optional accessories are available for plasma gun:

- Nozzle pulling tool
- Gun mounting fixture
- Injector holders
- Injectors
- Electrodes
- Nozzles

# GST F1-90 Plasma Gun

F1 plasma gun is designed and constructed specifically for applying coatings to the internal surfaces of components with an inside diameter of 75 mm or more and to a depth of up to 495 mm. Special body material enables spraying, preventing the electric fields influence on the surfacing process. This modification allows spraying with a plasma jet angle of 90° relative to the plasma gun body axis.

## GST F1-45 Plasma Gun



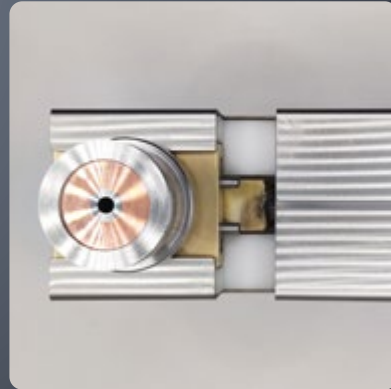
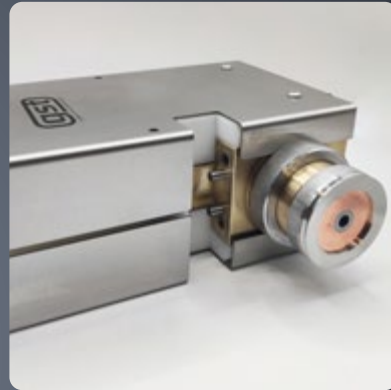
- 1 Shell for F1-45/90
- 2 Shell for F1-45/90
- 3 Shell for F1-45/90
- 4 Shell for F1-45/90
- 5 Holder
- 6 Socket head cap screw
- 7 Socket head cap screw for holder
- 8 Cover
- 9 Insulating sleeves and covers
- 10 Screw, M3x16
- 11 Centering pin
- 12a Electrode, plug type
- 12b Screw for electrode
- 13 Rear section complete
- 14 Connecting hose
- 15 Connecting hose clamp
- 16 Gas distribution ring
- 17 Intermediate section complete
- 18 O-Ring
- 19 Intermediate section complete
- 20 Front section
- 21 O-Ring
- 22 O-Ring
- 23.1 Nozzle, 5 mm
- 23.2 Nozzle, 6 mm
- 23.3 Nozzle, 7 mm
- 24 Injector support standard
- 25 Nozzle screws, M3x10
- 26 Locknut, M5
- 27.1 Powder injector 1.5 mm
- 27.2 Powder injector 1.8 mm
- 27.3 Powder injector 2.0 mm
- 27.4 Powder injector 1.5 mm
- 27.5 Powder injector 1.8 mm
- 27.6 Powder injector 2.0 mm
- 28 Gun holder complete
- 29 Screws, M3x6

Following optional accessories are available for plasma gun:

- Nozzle pulling tool
- Gun mounting fixture
- Injector holders
- Injectors
- Electrodes
- Nozzles

# GST F1-45 Plasma Gun

F1 plasma gun is designed and constructed specifically for applying coatings to the internal surfaces of components with an inside diameter of 75 mm or more and to a depth of up to 495 mm. Special body material enables spraying, preventing the electric fields influence on the surfacing process. This modification allows spraying with a plasma jet angle of 45° relative to the plasma gun body axis.



# GST F4MBXL-90 Plasma gun

GST F4MBXL-90 model is the most common and versatile plasma gun used to process the surfaces of components by applying various types of coatings, such as hardening coatings, anti-corrosion coatings, wear-resistant coatings, heat-resistant coatings, etc. Coating type depends on the material being sprayed. Metal powders, ceramic powders, cobalt-based alloy powders, carbide powders, etc. can be used.

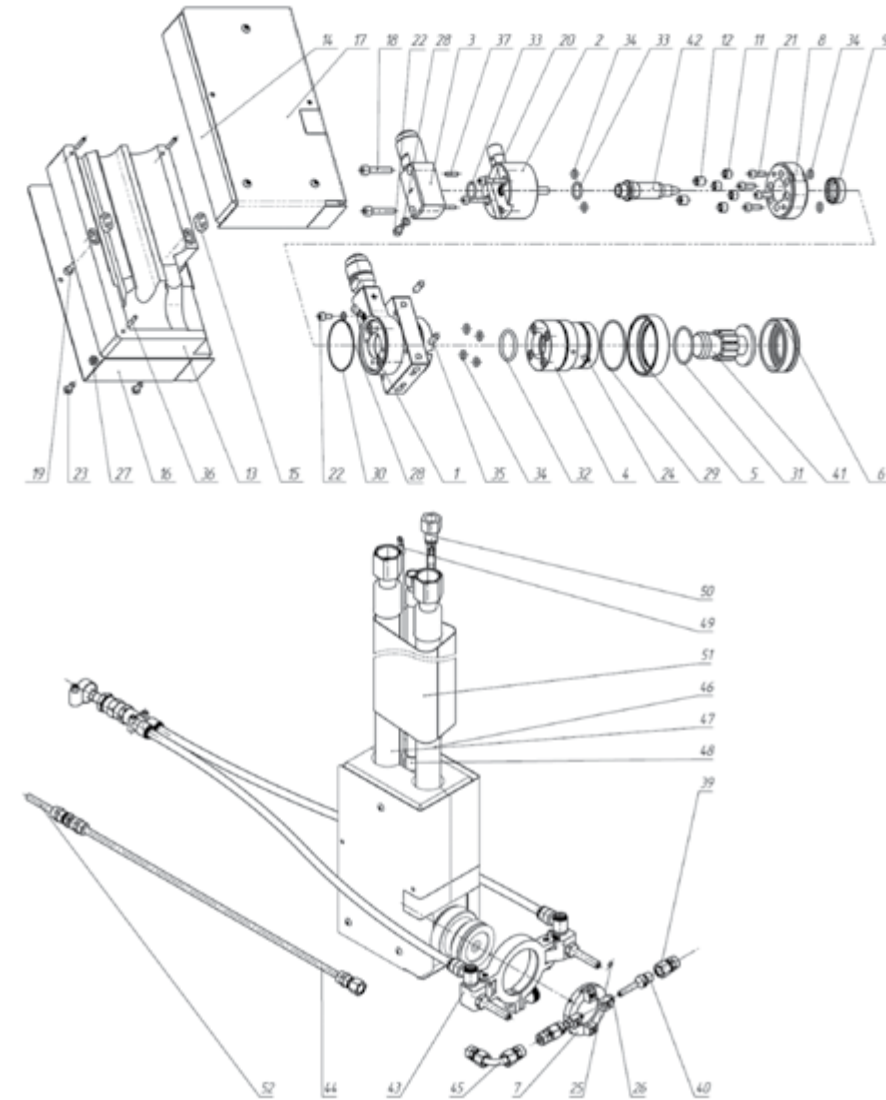
Plasma gun design features coaxially aligned nozzles and electrode, allowing the selection of different powder injector and shield cup diameters for a specific task and maximum productivity. Plasma gun can operate with various combinations of plasma gases, which ensures its applicability for a wide range of coatings.

GST F4MBXL-90 model allows spraying on the internal and external surfaces of workpieces at various angles relative to the surface being treated. Applicability of plasma gun for processing the internal surfaces of workpieces is limited by the plasma gun design, so it is necessary to consult with GST specialists before using it for this purpose.

Plasma gun design allows spraying only with external powder supply. Powder can be supplied in different ways (perpendicular to the jet, in the same direction as the jet or opposite to the jet).

F4MBXL, F4MBXL-90, F4-MB, F4-HB and F4-HBS plasma guns are unified in terms of main consumables.

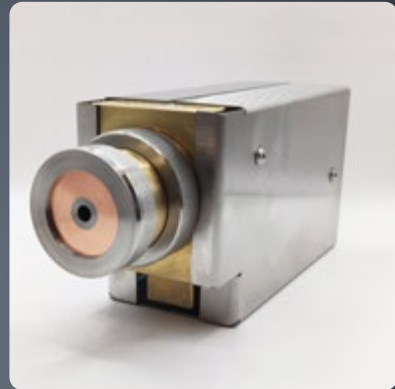
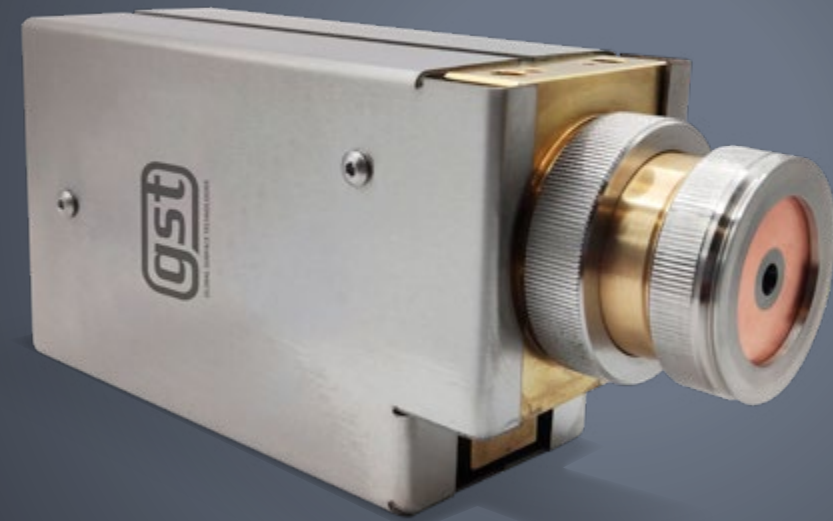
## GST F4MBXL-90 Plasma gun



- 1 Center Gun Body
- 2 Rear Gun Body Assembly
- 3 Rear Gun Body Fitting
- 4 Front Gun Body
- 5 Rear Locking Ring
- 6 Front Locking Ring
- 7 Injector Holder, Double, 90°/75° (90°/90°, 90°/105°, 90°/100°, 100°/100°, 100°/105°, 105°/105°, 105°/75°, 75°/75°)
- 7 Injector Holder, 4 x 90° (105°/75°/105°/75°, 75°/90°/75°/90°, 90°/75°/90°/105°, 105°/90°/105°/90°, 105°/90°/90°/75°)
- 8 Insulator Assembly
- 9 Gas Ring
- 11 Insulating Screw
- 12 Isolating threaded bushing
- 13 Cover part 1
- 14 Cover part 2
- 15 Cover key
- 16 Protective cover part 1
- 17 Protective cover part 2
- 18-25 Screw
- 26-27 Nut
- 28 Washer
- 29-34 O-Ring
- 35-37 Pin
- 39 Powder hose fitting
- 40 Powder Injector, 1.8 mm (with undercut), standard
- 40 Powder Injector, 1.5 mm (with undercut), standard
- 40 Powder Injector, 2.0 mm (with undercut), standard
- 41 Nozzle, 5 mm (6 mm, 7 mm, 8 mm)
- 42 Electrode WLa (WCa, WTh)
- 43 Air cooling nozzle
- 44 Metal extender
- 45 Powder remover 90°
- 46 Water-cooled power cable (red)
- 47 Water-cooled power cable (blue)
- 48 Plasma gas hose
- 49 Voltage control cable
- 50 Air cooling nozzle hose
- 51 Textile cable protection
- 52 Powder hose

Following optional accessories are available for plasma gun:

- Electrode centering tool
- Gun mounting fixture
- Injector distance gauge
- Air washing tool
- Injector holders
- Injectors
- Electrodes
- Nozzles



# GST F4MBXL Plasma gun

GST F4MBXL model is the most common and versatile plasma gun used to process the surfaces of components by applying various types of coatings, such as hardening coatings, anti-corrosion coatings, wear-resistant coatings, heat-resistant coatings, etc. Coating type depends on the material being sprayed. Metal powders, ceramic powders, cobalt-based alloy powders, carbide powders, etc. can be used.

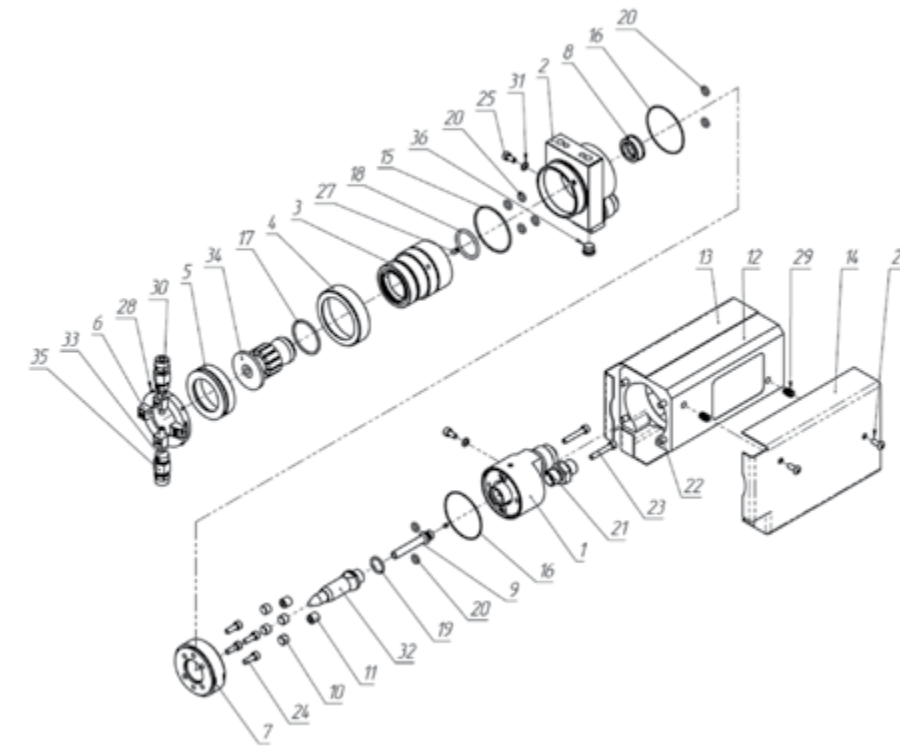
Plasma gun design features coaxially aligned nozzles and electrode, allowing the selection of different powder injector and shield cup diameters for a specific task and maximum productivity. Plasma gun can operate with various combinations of plasma gases, which ensures its applicability for a wide range of coatings.

GST F4MBXL model allows spraying on the internal and external surfaces of workpieces at various angles relative to the surface being treated. Applicability of plasma gun for processing the internal surfaces of workpieces is limited by the plasma gun design, so it is necessary to consult with GST specialists before using it for this purpose.

Plasma gun design allows spraying only with external powder supply. Powder can be supplied in different ways (perpendicular to the jet, in the same direction as the jet or opposite to the jet).

F4MBXL, F4MBXL-90, F4-MB, F4-HB and F4-HBS plasma guns are unified in terms of main consumables.

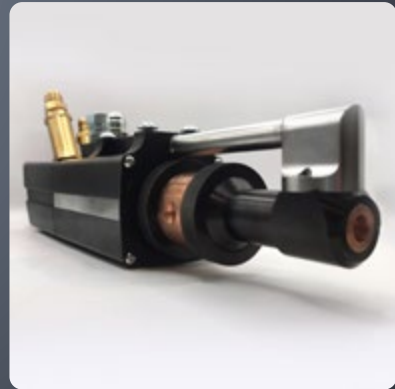
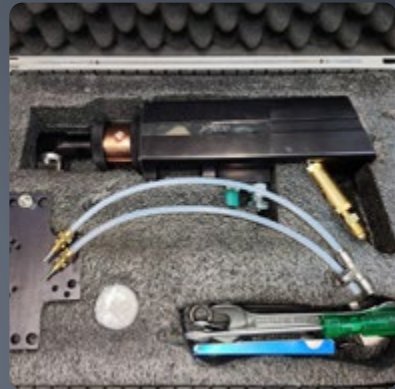
## GST F4MBXL Plasma gun



- 1 Rear Gun Body Assembly
- 2 Center Gun Body
- 3 Front Gun Body
- 4 Rear Locking Ring
- 5 Front Locking Ring
- 6 Injector Holder, Double, 90°/75° (90°/90°, 90°/105°, 90°/100°, 100°/100°, 100°/105°, 105°/105°, 105°/75°, 75°/75°)
- 6 Injector Holder, 4 x 90° (105°/75°/105°/75°, 75°/90°/75°/90°, 90°/75°/90°/105°, 105°/90°/105°/90°, 105°/90°/90°/75°)
- 7 Insulator Assembly
- 8 Gas Ring
- 9 Cooling tube
- 10 Insulating screw
- 11 Insulator threaded bushing
- 12 Cover Assembly
- 13 Protective cover part 1
- 14 Protective cover part 2
- 15-20 O-Ring
- 21 Fitting pipe
- 22-28 Screw
- 29 Fusion nut
- 30 Nut
- 31 Washer
- 32 Electrode WLa
- 32 Electrode WCe
- 32 Electrode WTh
- 33 Powder Injector, 1.8 mm (with undercut), standard
- 33 Powder Injector, 1.5 mm (with undercut), standard
- 33 Powder Injector, 2.0 mm (with undercut), standard
- 34 Nozzle, 5 mm (6 mm, 7 mm, 8 mm)
- 35 Powder hose fitting
- 36 Blind plug

Following optional accessories are available for plasma gun:

- Electrode centering tool
- Gun mounting fixture
- Injector distance gauge
- Air washing tool
- Injector holders
- Injectors
- Electrodes
- Nozzles



# GST JP5000 HVOF Spray Gun

The GST JP5000 HVOF (High-Velocity Oxygen Fuel) spray gun represents the gold standard in liquid-fuel thermal spray systems, delivering unmatched performance in coating durability, efficiency, and reliability. Engineered for industrial demands, this system utilizes kerosene-based combustion to produce exceptionally dense, wear-resistant, and corrosion-resistant coatings with superior mechanical properties.

### Unrivaled Performance & Durability

**Proven Liquid-Fuel Design:** Operates on kerosene and oxygen, offering a cost-effective yet high-performance alternative to gas-fueled HVOF systems.

**Extended Service Life:** Built with heavy-duty components to withstand prolonged operation in harsh industrial environments, minimizing downtime.

**Thick Coating Capability:** Deposits high-thickness coatings with compressive residual stresses, enhancing bond strength and fatigue resistance.

### Advanced Combustion & Coating Process

**Combustion & Flame Generation:** Kerosene and oxygen are atomized by a coaxial stabilizer and ignited in the combustion chamber, producing a high-pressure, supersonic flame (Mach 3+).

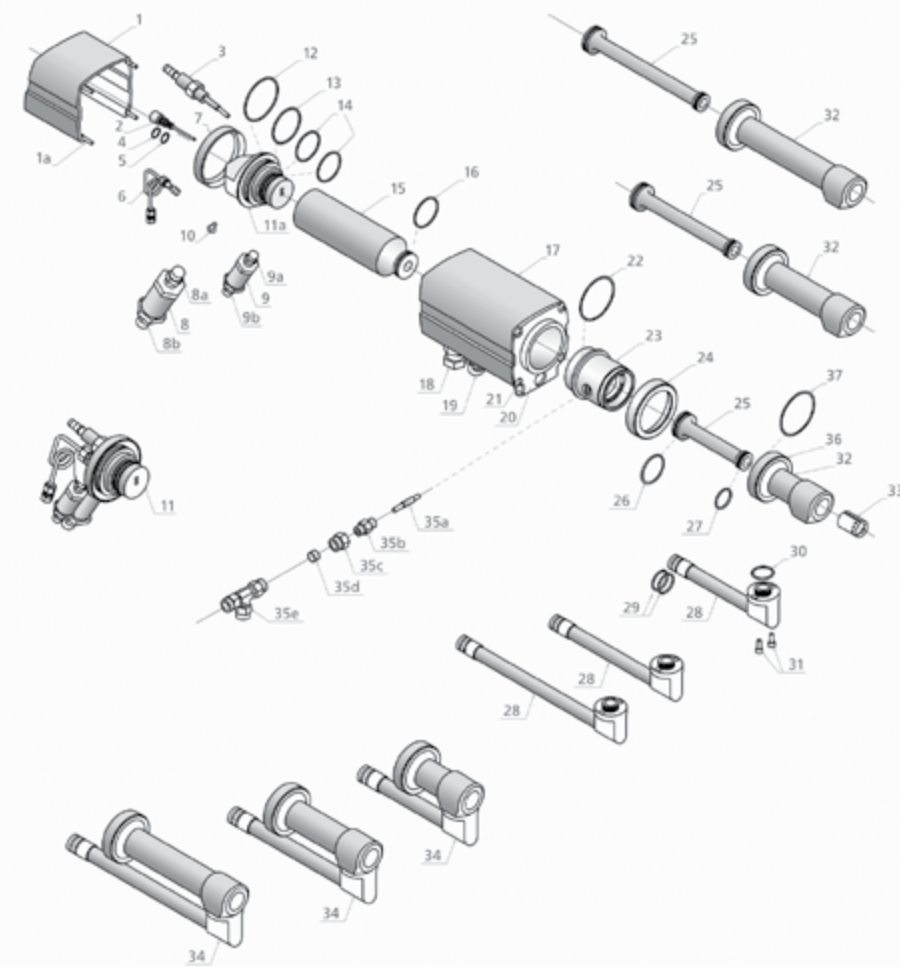
**Powder Injection & Acceleration:** Powder feedstock is radially injected through dual ports directly into the flame, ensuring optimal heating and acceleration.

The combustion gases and particles are forced through a converging-diverging (de Laval) nozzle, reaching hypersonic velocities.

### Coating Formation:

Particles impact the substrate in a plastic/semi-molten state, forming ultra-dense, low-porosity coatings with exceptional adhesion (>70 MPa).

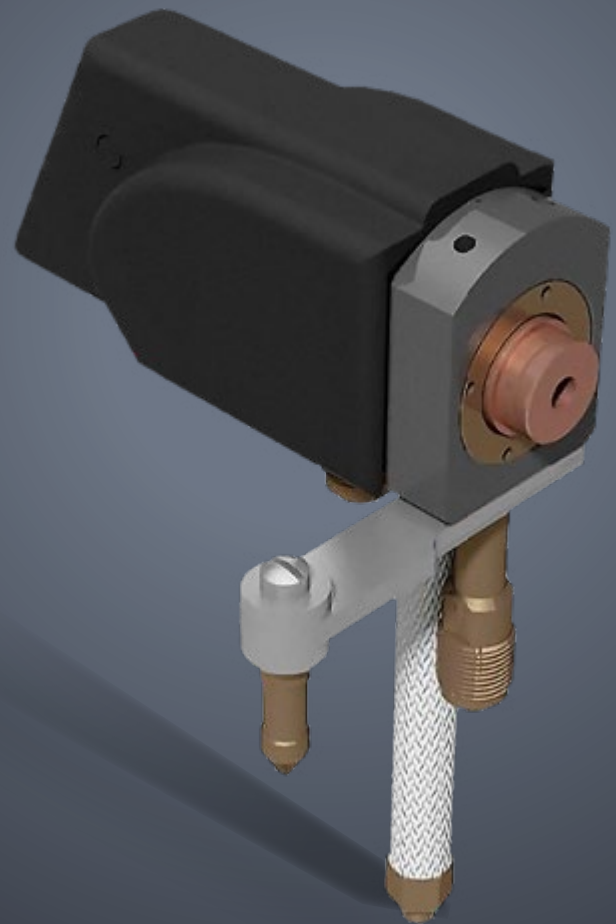
## GST JP5000 HVOF Spray Gun



- 1 Rear cover
- 1a Rear cover dowel pin
- 2 Coaxial fuel tube assembly
- 3 Spark plug assembly
- 4 O-Ring, coaxial fuel tube, rear
- 5 O-Ring, coaxial fuel tube, front
- 6 Combustion pressure tube assembly
- 7 Nut, stabilizer to water jacket
- 8 Oxygen check valve
- 8a Nipple, 1/4" Oxygen check valve to stabilizer
- 8b Adapter, 1/4" NPT
- 9 Fuel check valve
- 9a Nipple, 1/8" Fuel check valve to stabilizer
- 9b Adapter 1/8" NPT
- 10 Screw, ground cable
- 11 Coaxial stabilizer assembly
- 11a Rear gun body
- 12 O-Ring, stabilizer, back
- 13 O-Ring, comb. chamber to stab. spacer
- 14 O-Ring, stabilizer, front
- 15 Combustion chamber
- 16 O-Ring, combustion chamber
- 17 Water jacket
- 18 Fitting, swivel, water in, 3/8" MNPT
- 19 Fitting, water out
- 20 Front cover plate
- 21 Screw, front cover plate
- 22 O-Ring, interconnector
- 23 Interconnector
- 24 Nut, interconnector to water jacket
- 25 4" (6", 8") Barrel w/O-Rings
- 26 O-Ring, barrel, back
- 27 O-Ring, barrel, front
- 28 4" (6", 8") Water return tube
- 29 O-Ring, water return tube to water jacket
- 30 O-Ring, water return tube/barrel holder
- 31 Screw, water return to barrel holder
- 32 4" (6", 8") Barrel holder
- 33 Water baffle
- 34 4" (6", 8") Barrel assembly
- 35a Feed tube insert
- 35b Fitting, powder port 1/4"
- 35c Nut, 1/4" tube
- 35d Ferrule, plastic, 1/4" tube
- 35e Powder feed splitter
- 36 Nut, barrel holder to interconnector
- 37 O-Ring, barrel holder

### Key Advantages Over Competing Systems

- Superior Coating Density – Near-theoretical density with <1% porosity for maximum wear resistance.
- High Deposition Efficiency – Minimal material waste due to optimized powder injection.
- Rugged Construction – Designed for automated integration with robotic arms, CNC manipulators, and linear traverse systems.
- Versatile Applications – Ideal for WC-Co/Cr coatings, corrosion-resistant alloys, and thick protective overlays

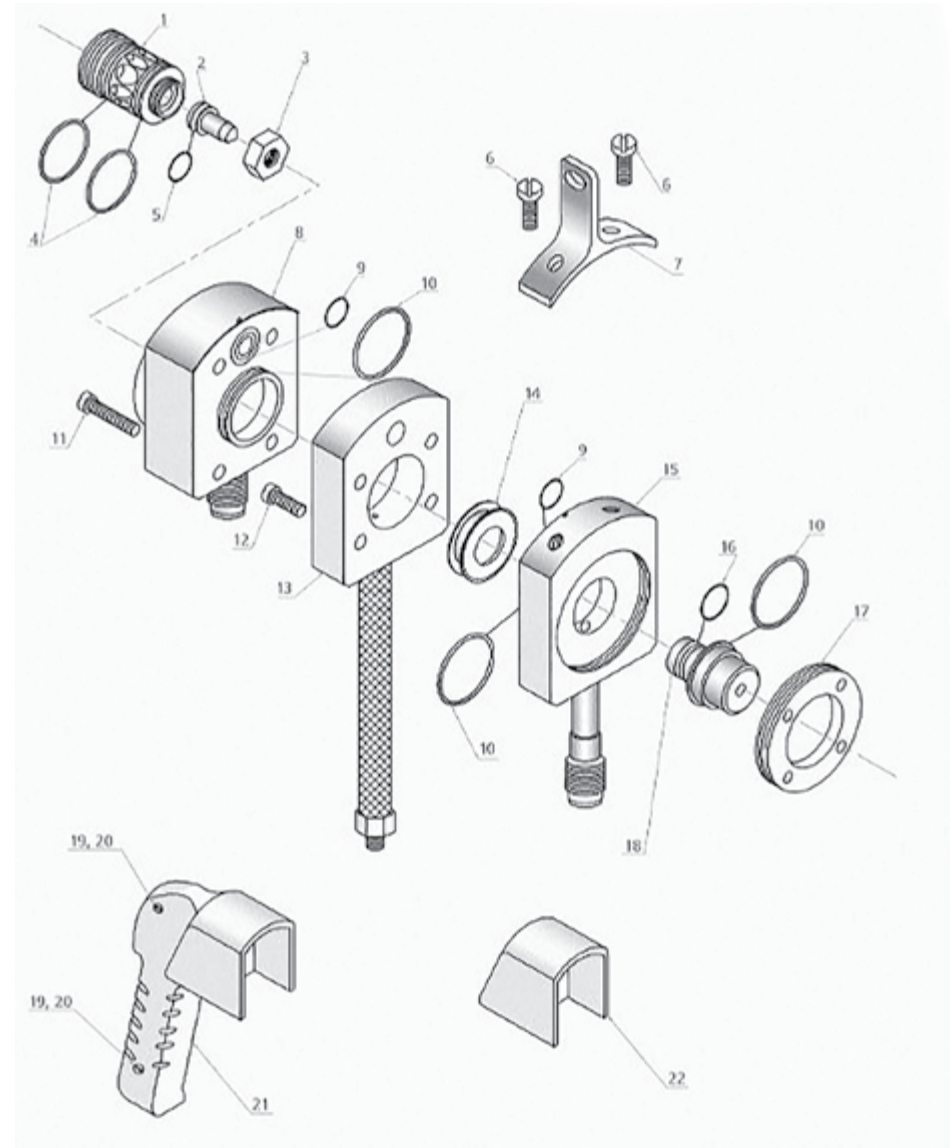


# GST 3MB Plasma Gun

GST 3MB Plasma gun is well known in the thermal spray industry for its durability and reliable performance. Many thermal spray service companies choose the 3MB plasma gun for a variety of coating application specifications.

The 3MB is capable of applying high-quality coatings to metals, metal alloys, carbides, composites, mixed materials, abrasives, and ceramic powders. The modular design allows for easier maintenance of the gun's main components. The nozzles and electrodes are simple plug-in/pull-out components that require no alignment or adjustment.

## GST 3MB Plasma Gun



- 1 Electrode holder
- 2 Electrode assembly
- 3 Electrode locking nut-black
- 4 O-Ring, electrode holder
- 5 O-Ring, electrode assembly
- 6 Mounting bracket mounting screw
- 7 Mounting bracket
- 8 Rear gun body assembly
- 9 O-Ring, front and rear gun body
- 10 O-Ring, gun bodies and nozzle
- 11 Screw - rear gun body
- 12 Screw - front gun body
- 13 Insulator and hose assembly
- 13 Insulator hose 6" (hose only)
- 14 Distribution ring, 1-hole argon
- 14 Distribution ring, 2-hole nitrogen
- 15 Front gun body assembly
- 16 O-Ring, nozzle, rear
- 17 Nozzle locking ring
- 18 "G" nozzle
- 18 "GE" nozzle
- 18 "GH" nozzle
- 18 "GP" nozzle
- 19 Handle screw
- 20 Handle nut
- 21 Handle assembly, hand held
- 22 Handle assembly, machine mounted

- The 3MB series plasma gun can efficiently operate with a single primary gas — pure argon or nitrogen — as well as multiple gases, including argon, nitrogen, hydrogen, and helium.
- The 3MB is available in both a machine-mounted (3MBM) and a portable (3MBH) configuration.

# SPARE PARTS FOR SPRAY GUNS





**GST F4MBXL-90 Plasma Gun spares**



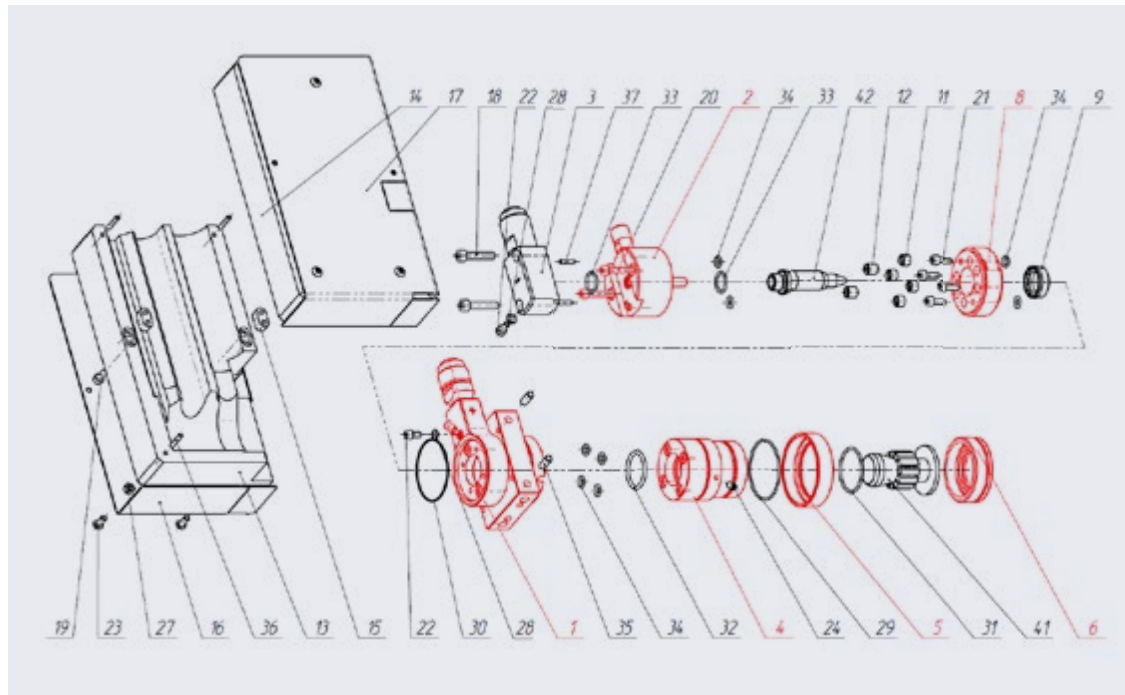
**1. Central housing**

- Part number — GST-100080
- OEM Part number — 1079065
- Plasma gun model — F4-90



**2. Cathode housing Assembly**

- Part number — GST-100119
- OEM Part number — 1079045
- Plasma gun model — F4-90



**4. Anode housing**

- Part number — GST-100002
- OEM Part number — 1003421
- Plasma gun model — F4, F4-90



**5. Rear nut**

- Part number — GST-100004
- OEM Part number — 1003425
- Plasma gun model — F4, F4-90



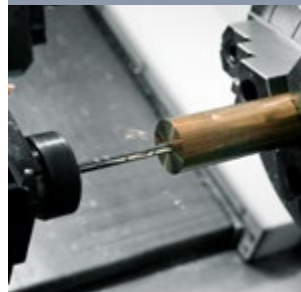
**6. Front nut**

- Part number — GST-100005
- OEM Part number — 1003419
- OEM Part number — 300.035
- Plasma gun model — F4, F4-90



**8. Insulator housing**

- Part number — GST-100101
- OEM Part number — 1003497
- OEM Part number — 300.015
- Plasma gun model — F4, F4-90





**GST F4MBXL-90 Plasma Gun spares**



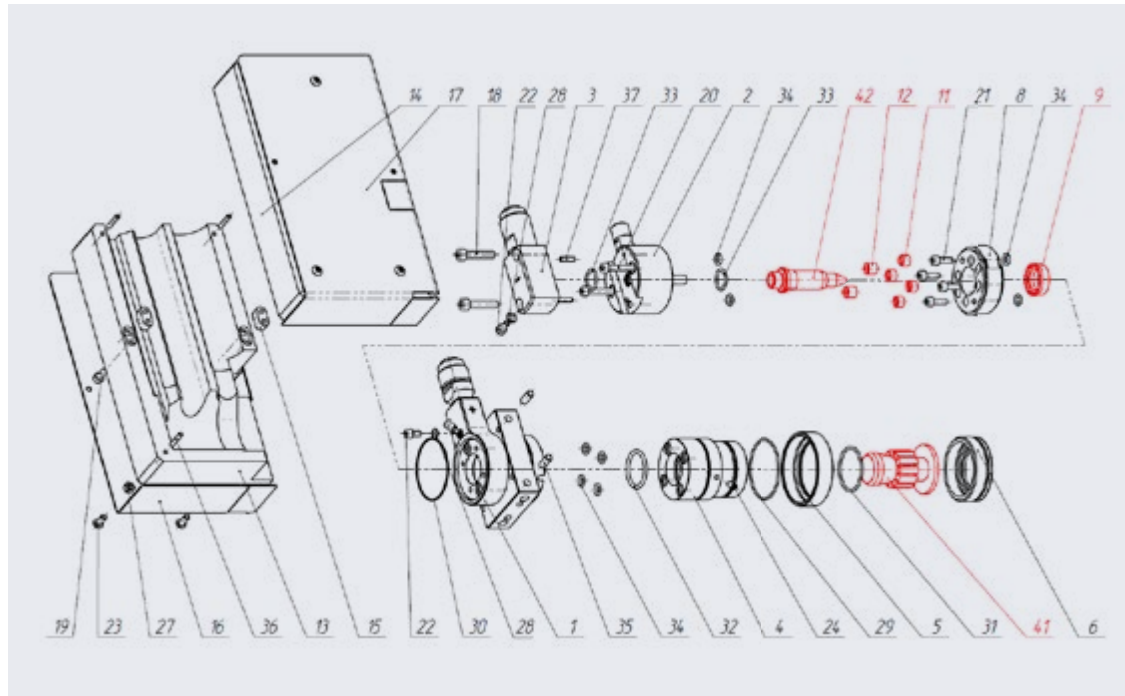
**9. Gas distributor**

- Part number — GST-100026
- OEM Part number — 1003499
- OEM Part number — 300.018
- Plasma gun model — F4, F4-90



**11. Insulating screw**

- Part number — GST-100024
- OEM Part number — 1003512
- OEM Part number — 300.010
- Plasma gun model — F4, F4-90



**12. Threaded insulator bushing**

- Part number — GST-100025
- Plasma gun model — F4, F4-90



**41. Nozzle**

Part number	Part name	OEM Part number	OEM Part number
GST-100046	F4 Nozzle, 5 mm	1003442	-
GST-100047	F4 Nozzle, 6 mm	1072007	-
GST-100086	F4 Nozzle, 7 mm	300002-10/1003407	300.029
GST-100087	F4 Nozzle, 8 mm	300002-20/1003408	300.031



**42. Electrode**

Part number	Part name	OEM Part number	OEM Part number
GST-100044	Electrode WLa	1072006	300.008
GST-100045	Electrode WCe	-	-
GST-100129	Electrode WTh	-	-





**GST F4MBXL-90**  
Plasma Gun  
spares



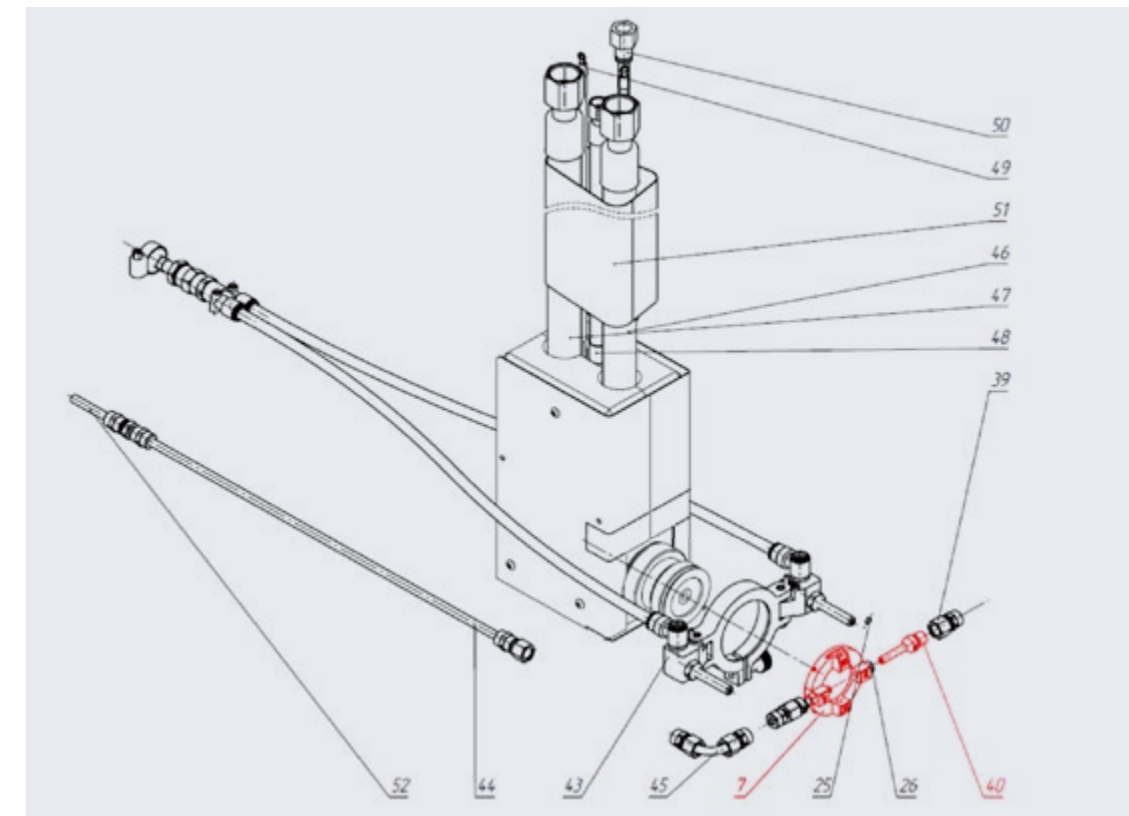
**7. injector Holder**

Part number	Part name	OEM Part number	OEM Part number
GST-100007	Double injector holder 90/75°	1003430	300.037-1
GST-100008	Double injector holder 90/90°	-	-
GST-100009	Double injector holder 90/105°	1003478	-
GST-100010	Double injector holder 90/100°	1006700	-
GST-100011	Double injector holder 100/100°	1003479	-
GST-100012	Double injector holder 100/105°	1003481	-
GST-100013	Double injector holder 105/105°	1003480	-
GST-100014	Double injector holder 105/75°	1008686	-
GST-100015	Double injector holder 75/75°	1003432	-
GST-100016	Quadruple injector Holder	1003443	-
GST-100017	Quadruple injector Holder	1003444	-
GST-100018	Quadruple injector Holder	1003445	-
GST-100006	Quadruple injector Holder	1008656	-
GST-100019	Quadruple injector Holder	1003446	-
GST-100020	Quadruple injector Holder	1008657	-



**40. 1.5 mm Powder injector**

Part number	Part name	OEM Part number	OEM Part number
GST-100197	1.8 mm Powder injector	1038715	-
GST-100198	1.5 mm Powder injector	1038714	-
GST-100199	2.0 mm Powder injector	1038716	-





GST F4MBXL  
Plasma Gun  
spares



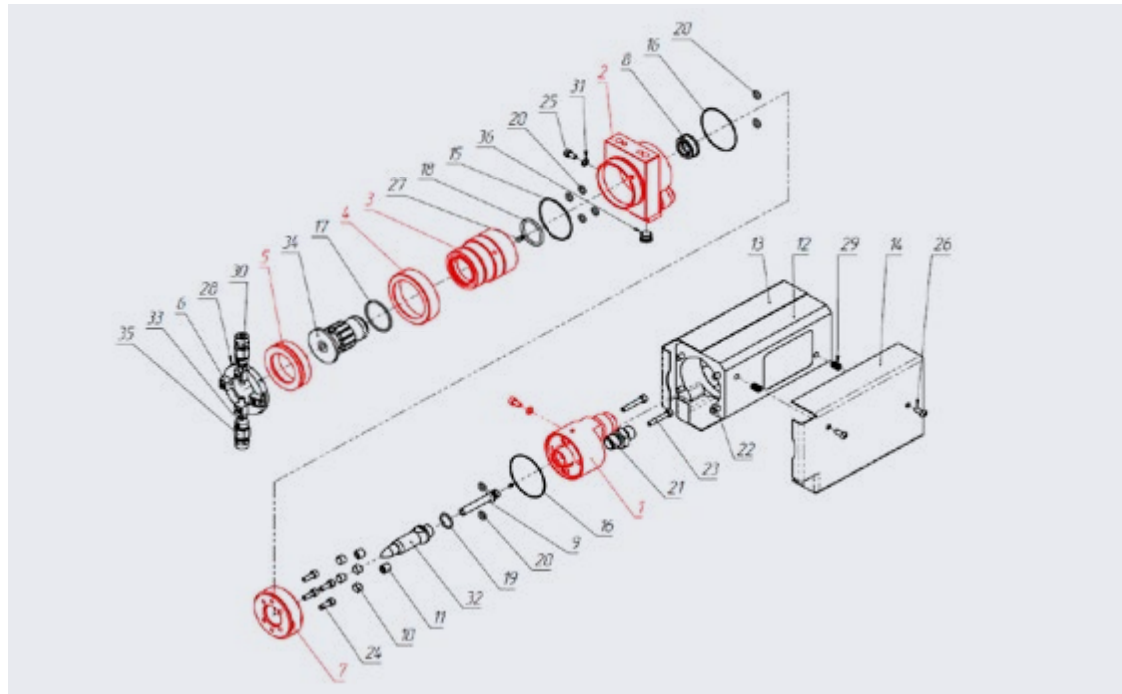
**1. Cathode housing Assembly**

- Part number — GST-100001
- OEM Part number — 1069416
- Plasma gun model — F4



**2. Central housing**

- Part number — GST-100032
- OEM Part number — 1069418
- Plasma gun model — F4



**3. Anode housing**

- Part number — GST-100002
- OEM Part number — 1003421
- Plasma gun model — F4, F4-90



**4. Rear Nut**

- Part number — GST-100004
- OEM Part number — 1003425
- Plasma gun model — F4, F4-90



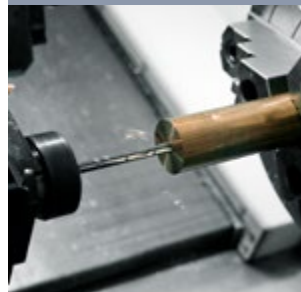
**5. Front Nut**

- Part number — GST-100005
- OEM Part number — 1003419
- OEM Part number — 300.035
- Plasma gun model — F4, F4-90



**7. Insulator housing**

- Part number — GST-100101
- OEM part number — 1003497
- OEM part number — 300.015
- Plasma gun model — F4, F4-90





**GST F4MBXL  
Plasma Gun  
spares**



**6. Injector Holder**

Part number	Part name	OEM Part number	OEM Part number
GST-100007	Double injector holder 90/75°	1003430	300.037-1
GST-100008	Double injector holder 90/90°	-	-
GST-100009	Double injector holder 90/105°	1003478	-
GST-100010	Double injector holder 90/100°	1006700	-
GST-100011	Double injector holder 100/100°	1003479	-
GST-100012	Double injector holder 100/105°	1003481	-
GST-100013	Double injector holder 105/105°	1003480	-
GST-100014	Double injector holder 105/75°	1008686	-
GST-100015	Double injector holder 75/75°	1003432	-
GST-100016	Quadruple injector Holder	1003443	-
GST-100017	Quadruple injector Holder	1003444	-
GST-100018	Quadruple injector Holder	1003445	-
GST-100006	Quadruple injector Holder	1008656	-
GST-100019	Quadruple injector Holder	1003446	-
GST-100020	Quadruple injector Holder	1008657	-



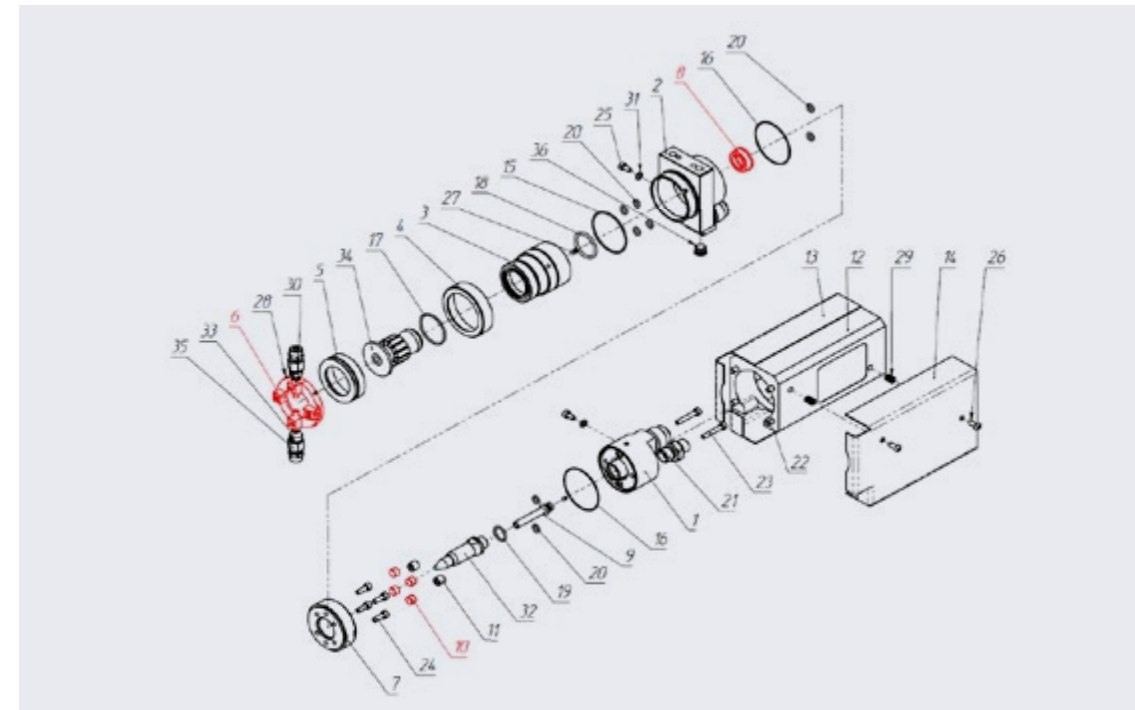
**8. Gas distributor**

- Part number — GST-100026
- OEM Part number — 1003499
- OEM Part number — 300.018
- Plasma Gun model — F4, F4-90



**10. Insulating screw**

- Part number — GST-100024
- OEM part number — 1003512
- OEM part number — 300.010
- Plasma gun model — F4, F4-90





GST F4MBXL  
Plasma Gun  
spares



**11. Threaded insulator bushing**

- Part number — GST-100025
- Plasma gun model — F4, F4-90



**12. Assembled casing**

- Part number — GST-100034
- OEM part number — 1069419
- Plasma gun model — F4



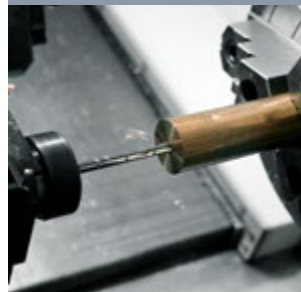
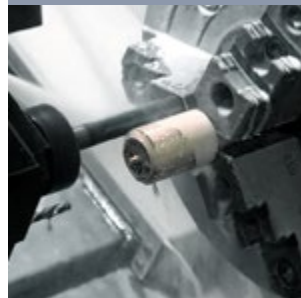
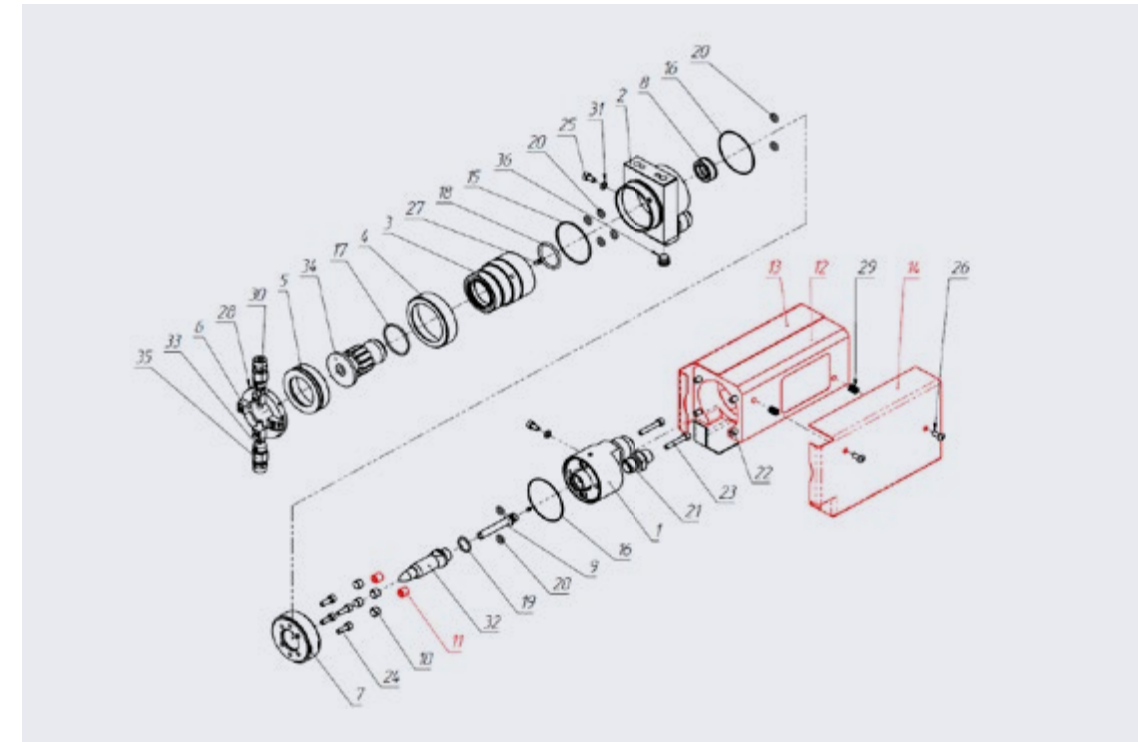
**13. Protective cover part 1**

- Part number — GST-100054
- Plasma gun model — F4



**14. Protective cover part 2**

- Part number — GST-100055
- Plasma gun model — F4



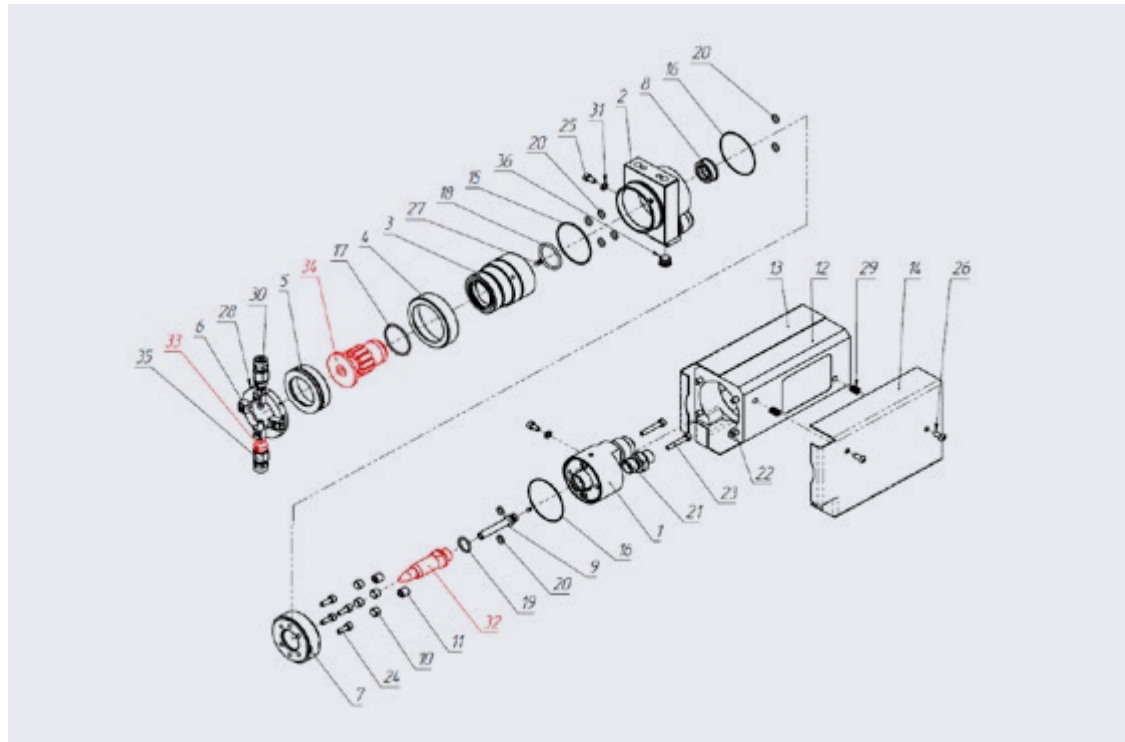


**GST F4MBXL  
Plasma Gun  
spares**



**32. Electrode**

Part number	Part name	OEM Part number	OEM Part number
GST-100044	WLa Electrode	1072006	300.008
GST-100045	WCe Electrode	-	-
GST-100129	WTh Electrode	-	-



**33. Powder injector 1.5 mm**

Part number	Part name	OEM Part number	OEM Part number
GST-100197	Powder injector 1.8 mm	1038715	-
GST-100198	Powder injector 1.5 mm	1038714	-
GST-100199	Powder injector 2.0 mm	1038716	-



**34. Nozzle**

Part number	Part name	OEM Part number	OEM Part number
GST-100046	F4 Nozzle, 5 mm	1003442	-
GST-100047	F4 Nozzle, 6 mm	1072007	-
GST-100086	F4 Nozzle, 7 mm	300002-10/1003407	300.029
GST-100087	F4 Nozzle, 8 mm	300002-20/1003408	300.031



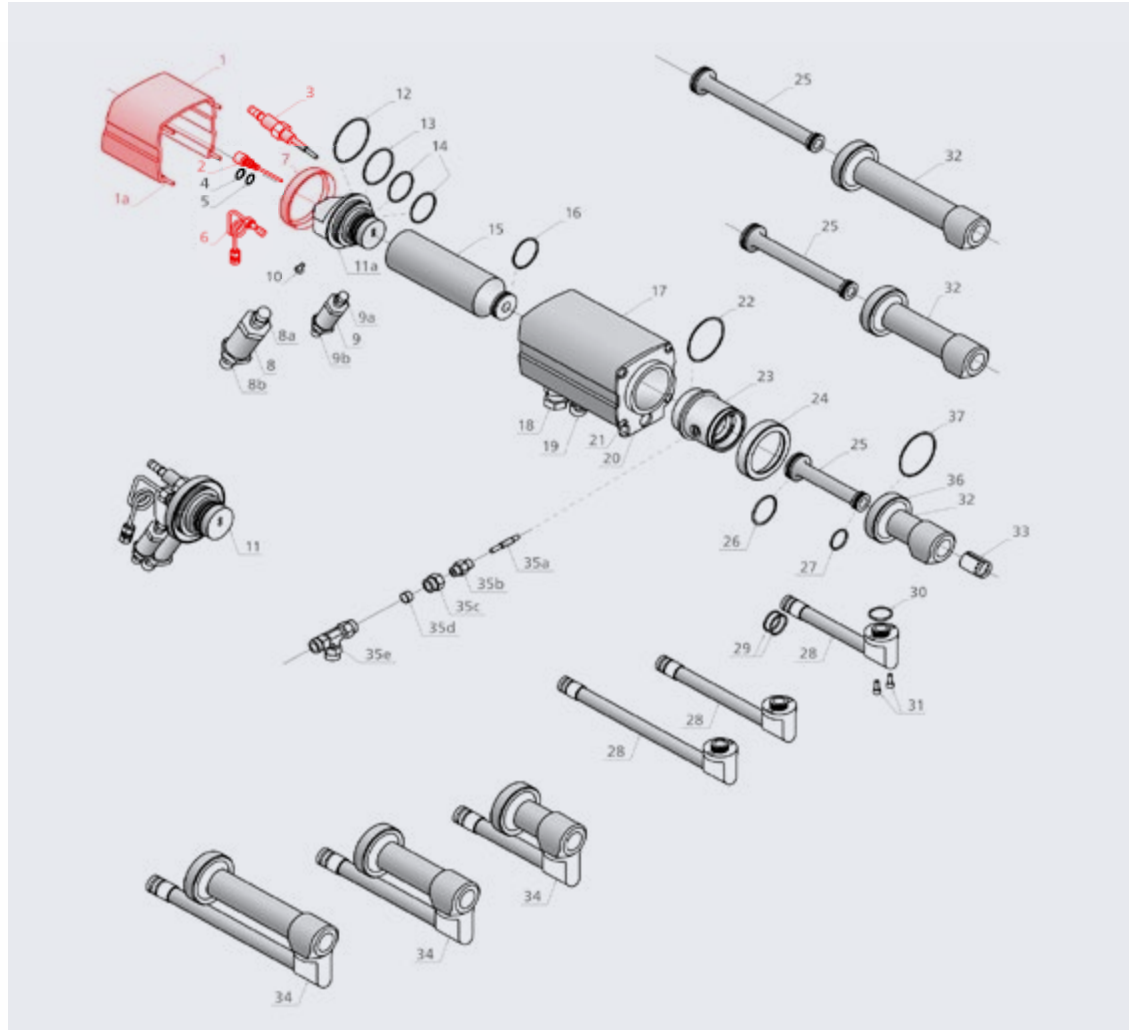


GST JP5000  
Spare parts



**1. Protective cover**

- Part number — GST-201044
- OEM Part number — 310.062
- Plasma gun model — JP5000



**2. Fuel line**

- Part number — GST-201095
- OEM Part number — 310.082
- Plasma gun model — JP5000



**3. Spark plug assembly**

- Part number — GST-201074
- OEM Part number — 310.074
- Plasma gun model — JP5000



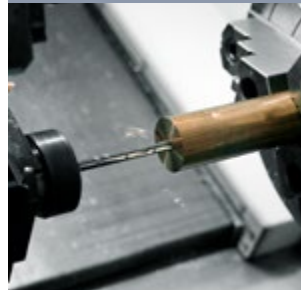
**6. Pressure sensor line assembly**

- Part number — GST-201090
- OEM Part number — 310.086
- Plasma gun model — JP5000



**7. Stabilizer nut**

- Part number — GST-201099
- OEM Part number — 310.045
- Plasma gun model — JP5000



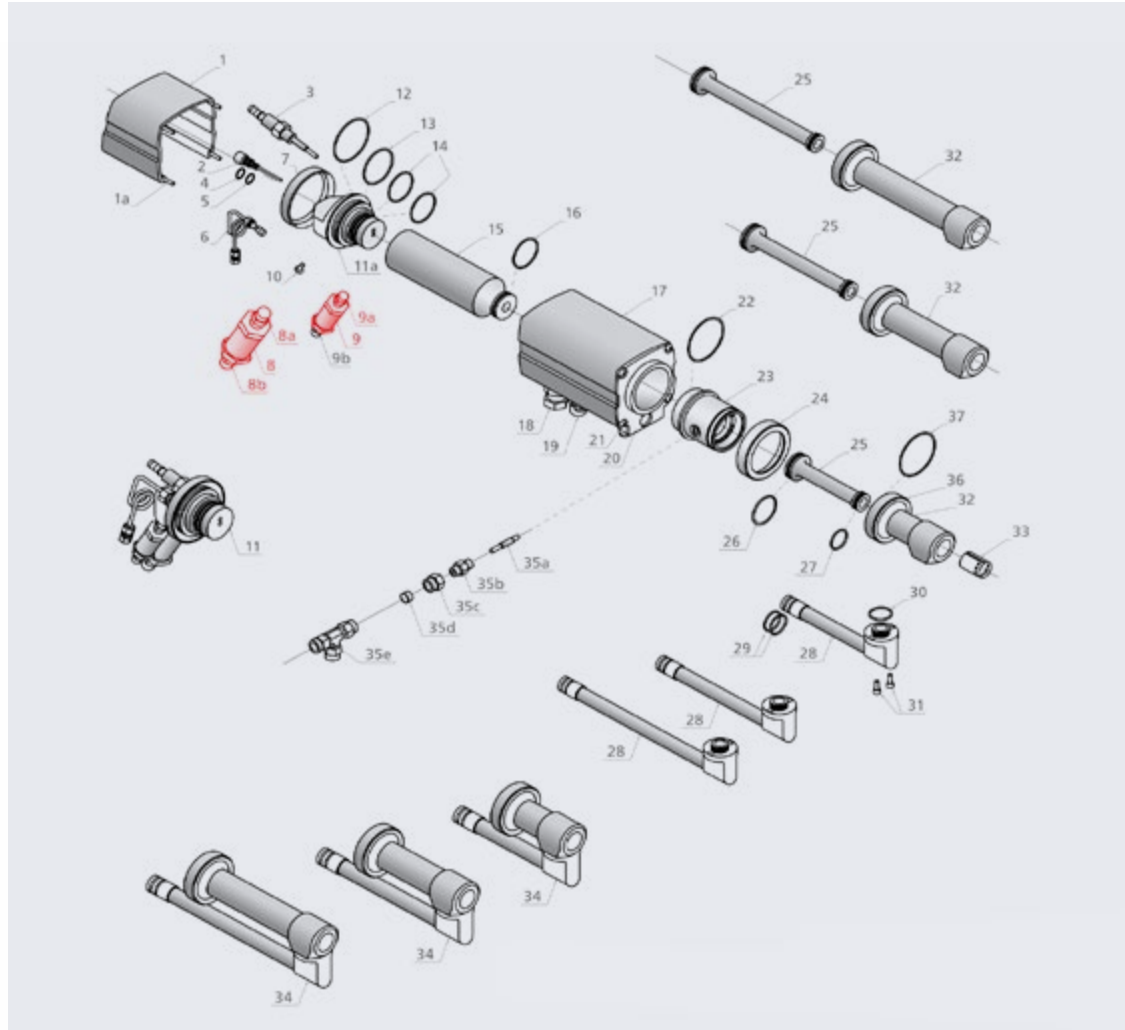


GST JP5000  
Spare parts



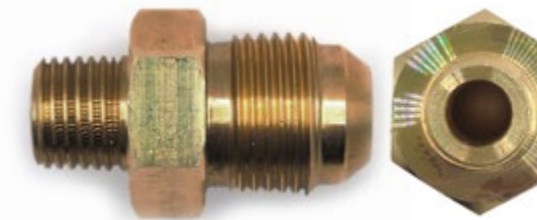
**8. Oxygen check valve**

- Part number — GST-201104
- OEM Part number — 310.103
- Plasma gun model — JP5000



**8a. Oxygen check valve nipple**

- Part number — GST-201106
- OEM Part number — 310.010
- Plasma gun model — JP5000



**8b. Oxygen adapter**

- Part number — GST-201101
- OEM Part number — 310.013
- Plasma gun model — JP5000



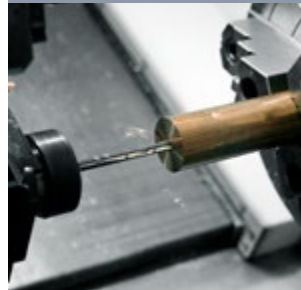
**9. Fuel check valve**

- Part number — GST-201105
- OEM Part number — 310.042
- Plasma gun model — JP5000



**9a. Check valve nipple (fuel)**

- Part number — GST-201107
- OEM part number — 310.009
- Plasma gun model — JP5000



Visit our website  
for more details



## THERMAL SPRAY GUNS

### SPARE PARTS

Global surface technologies was founded by former experienced team from world known surface solutions market leaders. We are starting our journey with intention to provide our customers with better engineered "turn key" surface treatment and thermal spray solutions.



[www.global-sft.com](http://www.global-sft.com)  
[info@global-sft.com](mailto:info@global-sft.com)